

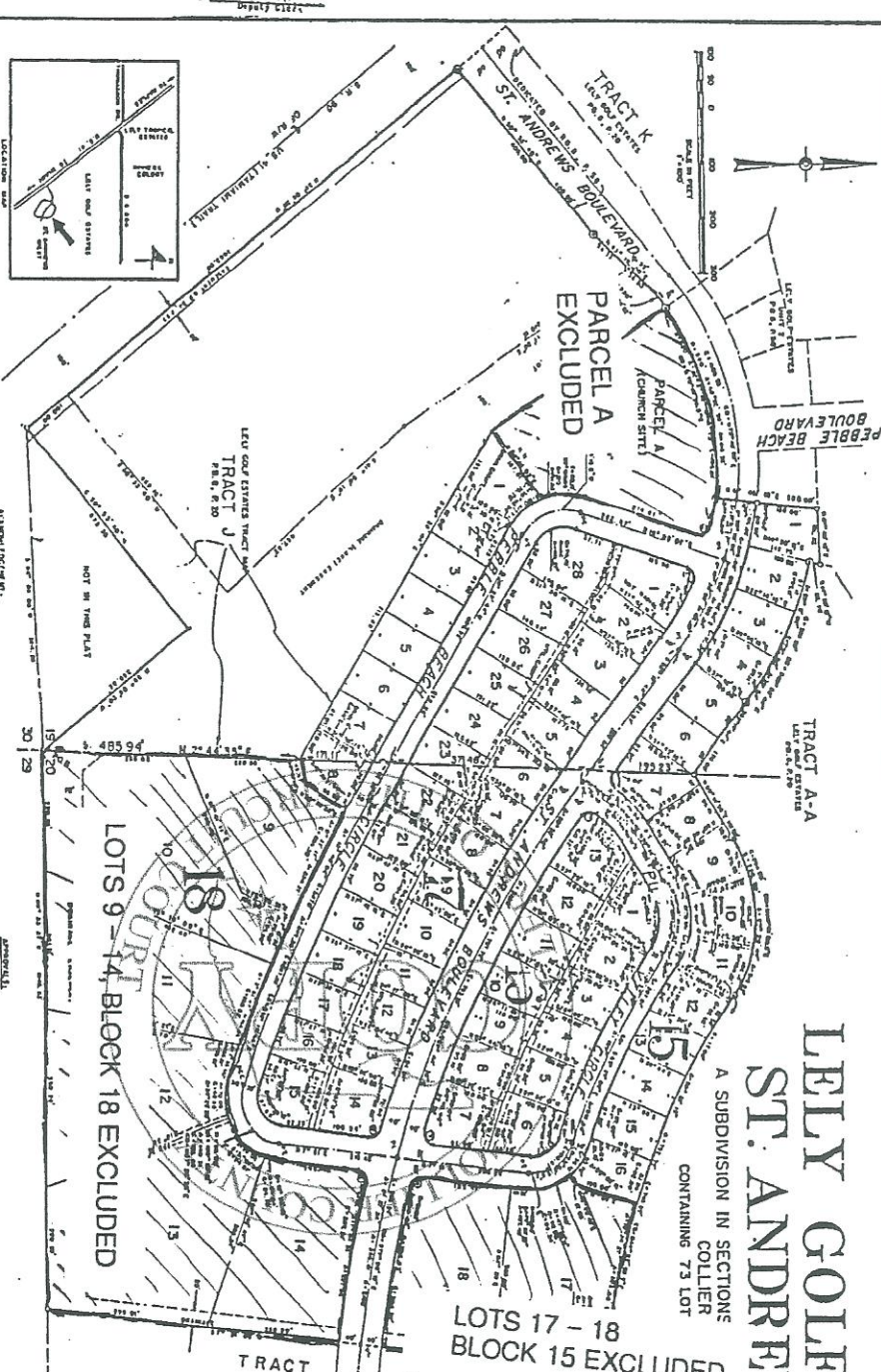
LELY GOLF ESTATES ST. ANDREWS WEST

A SUBDIVISION IN SECTIONS
COLLIER
CONTAINING 73 LOTS
TOWNSHIP 50 S., RANGE 26 E.,
FLORIDA

TRAC COUNTY ENGINEERING, INC.
CIVIL & STRUCTURAL ENGINEERS
SARASOTA & PALM BEACH, FLORIDA
PHYS. INC. 1-1971-00 1094, 1072

LEGAL DESCRIPTION:

From the report of acceptance of this subdivision, prepared by the undersigned, dated August 24, 1971, and filed for record in the Public Records of Collier County, Florida, Book 10, Page 97, the following description of the subdivision is given: This subdivision is located in Sections 15, 16, 17, 18, 19, 20, 21, 22, 23, 24, 25, 26, 27, 28, 29, 30, 31, 32, 33, 34, 35, 36, 37, 38, 39, 40, 41, 42, 43, 44, 45, 46, 47, 48, 49, 50, 51, 52, 53, 54, 55, 56, 57, 58, 59, 60, 61, 62, 63, 64, 65, 66, 67, 68, 69, 70, 71, 72, 73, 74, 75, 76, 77, 78, 79, 80, 81, 82, 83, 84, 85, 86, 87, 88, 89, 90, 91, 92, 93, 94, 95, 96, 97, 98, 99, 100, 101, 102, 103, 104, 105, 106, 107, 108, 109, 110, 111, 112, 113, 114, 115, 116, 117, 118, 119, 120, 121, 122, 123, 124, 125, 126, 127, 128, 129, 130, 131, 132, 133, 134, 135, 136, 137, 138, 139, 140, 141, 142, 143, 144, 145, 146, 147, 148, 149, 150, 151, 152, 153, 154, 155, 156, 157, 158, 159, 160, 161, 162, 163, 164, 165, 166, 167, 168, 169, 170, 171, 172, 173, 174, 175, 176, 177, 178, 179, 180, 181, 182, 183, 184, 185, 186, 187, 188, 189, 190, 191, 192, 193, 194, 195, 196, 197, 198, 199, 200, 201, 202, 203, 204, 205, 206, 207, 208, 209, 210, 211, 212, 213, 214, 215, 216, 217, 218, 219, 220, 221, 222, 223, 224, 225, 226, 227, 228, 229, 230, 231, 232, 233, 234, 235, 236, 237, 238, 239, 240, 241, 242, 243, 244, 245, 246, 247, 248, 249, 250, 251, 252, 253, 254, 255, 256, 257, 258, 259, 260, 261, 262, 263, 264, 265, 266, 267, 268, 269, 270, 271, 272, 273, 274, 275, 276, 277, 278, 279, 280, 281, 282, 283, 284, 285, 286, 287, 288, 289, 290, 291, 292, 293, 294, 295, 296, 297, 298, 299, 300, 301, 302, 303, 304, 305, 306, 307, 308, 309, 310, 311, 312, 313, 314, 315, 316, 317, 318, 319, 320, 321, 322, 323, 324, 325, 326, 327, 328, 329, 330, 331, 332, 333, 334, 335, 336, 337, 338, 339, 340, 341, 342, 343, 344, 345, 346, 347, 348, 349, 350, 351, 352, 353, 354, 355, 356, 357, 358, 359, 360, 361, 362, 363, 364, 365, 366, 367, 368, 369, 370, 371, 372, 373, 374, 375, 376, 377, 378, 379, 380, 381, 382, 383, 384, 385, 386, 387, 388, 389, 390, 391, 392, 393, 394, 395, 396, 397, 398, 399, 400, 401, 402, 403, 404, 405, 406, 407, 408, 409, 410, 411, 412, 413, 414, 415, 416, 417, 418, 419, 420, 421, 422, 423, 424, 425, 426, 427, 428, 429, 430, 431, 432, 433, 434, 435, 436, 437, 438, 439, 440, 441, 442, 443, 444, 445, 446, 447, 448, 449, 450, 451, 452, 453, 454, 455, 456, 457, 458, 459, 460, 461, 462, 463, 464, 465, 466, 467, 468, 469, 470, 471, 472, 473, 474, 475, 476, 477, 478, 479, 480, 481, 482, 483, 484, 485, 486, 487, 488, 489, 490, 491, 492, 493, 494, 495, 496, 497, 498, 499, 500, 501, 502, 503, 504, 505, 506, 507, 508, 509, 510, 511, 512, 513, 514, 515, 516, 517, 518, 519, 520, 521, 522, 523, 524, 525, 526, 527, 528, 529, 530, 531, 532, 533, 534, 535, 536, 537, 538, 539, 540, 541, 542, 543, 544, 545, 546, 547, 548, 549, 550, 551, 552, 553, 554, 555, 556, 557, 558, 559, 560, 561, 562, 563, 564, 565, 566, 567, 568, 569, 570, 571, 572, 573, 574, 575, 576, 577, 578, 579, 580, 581, 582, 583, 584, 585, 586, 587, 588, 589, 590, 591, 592, 593, 594, 595, 596, 597, 598, 599, 600, 601, 602, 603, 604, 605, 606, 607, 608, 609, 610, 611, 612, 613, 614, 615, 616, 617, 618, 619, 620, 621, 622, 623, 624, 625, 626, 627, 628, 629, 630, 631, 632, 633, 634, 635, 636, 637, 638, 639, 640, 641, 642, 643, 644, 645, 646, 647, 648, 649, 650, 651, 652, 653, 654, 655, 656, 657, 658, 659, 660, 661, 662, 663, 664, 665, 666, 667, 668, 669, 670, 671, 672, 673, 674, 675, 676, 677, 678, 679, 680, 681, 682, 683, 684, 685, 686, 687, 688, 689, 690, 691, 692, 693, 694, 695, 696, 697, 698, 699, 700, 701, 702, 703, 704, 705, 706, 707, 708, 709, 710, 711, 712, 713, 714, 715, 716, 717, 718, 719, 720, 721, 722, 723, 724, 725, 726, 727, 728, 729, 730, 731, 732, 733, 734, 735, 736, 737, 738, 739, 740, 741, 742, 743, 744, 745, 746, 747, 748, 749, 750, 751, 752, 753, 754, 755, 756, 757, 758, 759, 760, 761, 762, 763, 764, 765, 766, 767, 768, 769, 770, 771, 772, 773, 774, 775, 776, 777, 778, 779, 780, 781, 782, 783, 784, 785, 786, 787, 788, 789, 790, 791, 792, 793, 794, 795, 796, 797, 798, 799, 800, 801, 802, 803, 804, 805, 806, 807, 808, 809, 810, 811, 812, 813, 814, 815, 816, 817, 818, 819, 820, 821, 822, 823, 824, 825, 826, 827, 828, 829, 830, 831, 832, 833, 834, 835, 836, 837, 838, 839, 840, 841, 842, 843, 844, 845, 846, 847, 848, 849, 850, 851, 852, 853, 854, 855, 856, 857, 858, 859, 860, 861, 862, 863, 864, 865, 866, 867, 868, 869, 870, 871, 872, 873, 874, 875, 876, 877, 878, 879, 880, 881, 882, 883, 884, 885, 886, 887, 888, 889, 890, 891, 892, 893, 894, 895, 896, 897, 898, 899, 900, 901, 902, 903, 904, 905, 906, 907, 908, 909, 910, 911, 912, 913, 914, 915, 916, 917, 918, 919, 920, 921, 922, 923, 924, 925, 926, 927, 928, 929, 930, 931, 932, 933, 934, 935, 936, 937, 938, 939, 940, 941, 942, 943, 944, 945, 946, 947, 948, 949, 950, 951, 952, 953, 954, 955, 956, 957, 958, 959, 960, 961, 962, 963, 964, 965, 966, 967, 968, 969, 970, 971, 972, 973, 974, 975, 976, 977, 978, 979, 980, 981, 982, 983, 984, 985, 986, 987, 988, 989, 990, 991, 992, 993, 994, 995, 996, 997, 998, 999, 1000.



EXCLUDED AREAS:

- ① 100' x 100' x 100' x 100'
- ② 100' x 100' x 100' x 100'
- ③ 100' x 100' x 100' x 100'
- ④ 100' x 100' x 100' x 100'
- ⑤ 100' x 100' x 100' x 100'
- ⑥ 100' x 100' x 100' x 100'
- ⑦ 100' x 100' x 100' x 100'
- ⑧ 100' x 100' x 100' x 100'
- ⑨ 100' x 100' x 100' x 100'
- ⑩ 100' x 100' x 100' x 100'
- ⑪ 100' x 100' x 100' x 100'
- ⑫ 100' x 100' x 100' x 100'
- ⑬ 100' x 100' x 100' x 100'
- ⑭ 100' x 100' x 100' x 100'
- ⑮ 100' x 100' x 100' x 100'
- ⑯ 100' x 100' x 100' x 100'
- ⑰ 100' x 100' x 100' x 100'
- ⑱ 100' x 100' x 100' x 100'
- ⑲ 100' x 100' x 100' x 100'
- ⑳ 100' x 100' x 100' x 100'
- ㉑ 100' x 100' x 100' x 100'
- ㉒ 100' x 100' x 100' x 100'
- ㉓ 100' x 100' x 100' x 100'
- ㉔ 100' x 100' x 100' x 100'
- ㉕ 100' x 100' x 100' x 100'
- ㉖ 100' x 100' x 100' x 100'
- ㉗ 100' x 100' x 100' x 100'
- ㉘ 100' x 100' x 100' x 100'
- ㉙ 100' x 100' x 100' x 100'
- ㉚ 100' x 100' x 100' x 100'
- ㉛ 100' x 100' x 100' x 100'
- ㉜ 100' x 100' x 100' x 100'
- ㉝ 100' x 100' x 100' x 100'
- ㉞ 100' x 100' x 100' x 100'
- ㉟ 100' x 100' x 100' x 100'
- ㊱ 100' x 100' x 100' x 100'
- ㊲ 100' x 100' x 100' x 100'
- ㊳ 100' x 100' x 100' x 100'
- ㊴ 100' x 100' x 100' x 100'
- ㊵ 100' x 100' x 100' x 100'
- ㊶ 100' x 100' x 100' x 100'
- ㊷ 100' x 100' x 100' x 100'
- ㊸ 100' x 100' x 100' x 100'
- ㊹ 100' x 100' x 100' x 100'
- ㊺ 100' x 100' x 100' x 100'
- ㊻ 100' x 100' x 100' x 100'
- ㊼ 100' x 100' x 100' x 100'
- ㊽ 100' x 100' x 100' x 100'
- ㊾ 100' x 100' x 100' x 100'
- ㊿ 100' x 100' x 100' x 100'

LOCATION MAP

LEGEND

- 1. 100' x 100' x 100' x 100'
- 2. 100' x 100' x 100' x 100'
- 3. 100' x 100' x 100' x 100'
- 4. 100' x 100' x 100' x 100'
- 5. 100' x 100' x 100' x 100'
- 6. 100' x 100' x 100' x 100'
- 7. 100' x 100' x 100' x 100'
- 8. 100' x 100' x 100' x 100'
- 9. 100' x 100' x 100' x 100'
- 10. 100' x 100' x 100' x 100'
- 11. 100' x 100' x 100' x 100'
- 12. 100' x 100' x 100' x 100'
- 13. 100' x 100' x 100' x 100'
- 14. 100' x 100' x 100' x 100'
- 15. 100' x 100' x 100' x 100'
- 16. 100' x 100' x 100' x 100'
- 17. 100' x 100' x 100' x 100'
- 18. 100' x 100' x 100' x 100'
- 19. 100' x 100' x 100' x 100'
- 20. 100' x 100' x 100' x 100'
- 21. 100' x 100' x 100' x 100'
- 22. 100' x 100' x 100' x 100'
- 23. 100' x 100' x 100' x 100'
- 24. 100' x 100' x 100' x 100'
- 25. 100' x 100' x 100' x 100'
- 26. 100' x 100' x 100' x 100'
- 27. 100' x 100' x 100' x 100'
- 28. 100' x 100' x 100' x 100'
- 29. 100' x 100' x 100' x 100'
- 30. 100' x 100' x 100' x 100'
- 31. 100' x 100' x 100' x 100'
- 32. 100' x 100' x 100' x 100'
- 33. 100' x 100' x 100' x 100'
- 34. 100' x 100' x 100' x 100'
- 35. 100' x 100' x 100' x 100'
- 36. 100' x 100' x 100' x 100'
- 37. 100' x 100' x 100' x 100'
- 38. 100' x 100' x 100' x 100'
- 39. 100' x 100' x 100' x 100'
- 40. 100' x 100' x 100' x 100'
- 41. 100' x 100' x 100' x 100'
- 42. 100' x 100' x 100' x 100'
- 43. 100' x 100' x 100' x 100'
- 44. 100' x 100' x 100' x 100'
- 45. 100' x 100' x 100' x 100'
- 46. 100' x 100' x 100' x 100'
- 47. 100' x 100' x 100' x 100'
- 48. 100' x 100' x 100' x 100'
- 49. 100' x 100' x 100' x 100'
- 50. 100' x 100' x 100' x 100'
- 51. 100' x 100' x 100' x 100'
- 52. 100' x 100' x 100' x 100'
- 53. 100' x 100' x 100' x 100'
- 54. 100' x 100' x 100' x 100'
- 55. 100' x 100' x 100' x 100'
- 56. 100' x 100' x 100' x 100'
- 57. 100' x 100' x 100' x 100'
- 58. 100' x 100' x 100' x 100'
- 59. 100' x 100' x 100' x 100'
- 60. 100' x 100' x 100' x 100'
- 61. 100' x 100' x 100' x 100'
- 62. 100' x 100' x 100' x 100'
- 63. 100' x 100' x 100' x 100'
- 64. 100' x 100' x 100' x 100'
- 65. 100' x 100' x 100' x 100'
- 66. 100' x 100' x 100' x 100'
- 67. 100' x 100' x 100' x 100'
- 68. 100' x 100' x 100' x 100'
- 69. 100' x 100' x 100' x 100'
- 70. 100' x 100' x 100' x 100'
- 71. 100' x 100' x 100' x 100'
- 72. 100' x 100' x 100' x 100'
- 73. 100' x 100' x 100' x 100'
- 74. 100' x 100' x 100' x 100'
- 75. 100' x 100' x 100' x 100'
- 76. 100' x 100' x 100' x 100'
- 77. 100' x 100' x 100' x 100'
- 78. 100' x 100' x 100' x 100'
- 79. 100' x 100' x 100' x 100'
- 80. 100' x 100' x 100' x 100'
- 81. 100' x 100' x 100' x 100'
- 82. 100' x 100' x 100' x 100'
- 83. 100' x 100' x 100' x 100'
- 84. 100' x 100' x 100' x 100'
- 85. 100' x 100' x 100' x 100'
- 86. 100' x 100' x 100' x 100'
- 87. 100' x 100' x 100' x 100'
- 88. 100' x 100' x 100' x 100'
- 89. 100' x 100' x 100' x 100'
- 90. 100' x 100' x 100' x 100'
- 91. 100' x 100' x 100' x 100'
- 92. 100' x 100' x 100' x 100'
- 93. 100' x 100' x 100' x 100'
- 94. 100' x 100' x 100' x 100'
- 95. 100' x 100' x 100' x 100'
- 96. 100' x 100' x 100' x 100'
- 97. 100' x 100' x 100' x 100'
- 98. 100' x 100' x 100' x 100'
- 99. 100' x 100' x 100' x 100'
- 100. 100' x 100' x 100' x 100'

NOTES:

1. All lots are to be surveyed and plat filed in accordance with the provisions of the Florida Statutes, Chapter 173, and the rules and regulations of the Florida Board of Survey.
2. The plat is subject to the provisions of the Florida Statutes, Chapter 173, and the rules and regulations of the Florida Board of Survey.
3. The plat is subject to the provisions of the Florida Statutes, Chapter 173, and the rules and regulations of the Florida Board of Survey.
4. The plat is subject to the provisions of the Florida Statutes, Chapter 173, and the rules and regulations of the Florida Board of Survey.
5. The plat is subject to the provisions of the Florida Statutes, Chapter 173, and the rules and regulations of the Florida Board of Survey.
6. The plat is subject to the provisions of the Florida Statutes, Chapter 173, and the rules and regulations of the Florida Board of Survey.
7. The plat is subject to the provisions of the Florida Statutes, Chapter 173, and the rules and regulations of the Florida Board of Survey.
8. The plat is subject to the provisions of the Florida Statutes, Chapter 173, and the rules and regulations of the Florida Board of Survey.
9. The plat is subject to the provisions of the Florida Statutes, Chapter 173, and the rules and regulations of the Florida Board of Survey.
10. The plat is subject to the provisions of the Florida Statutes, Chapter 173, and the rules and regulations of the Florida Board of Survey.