

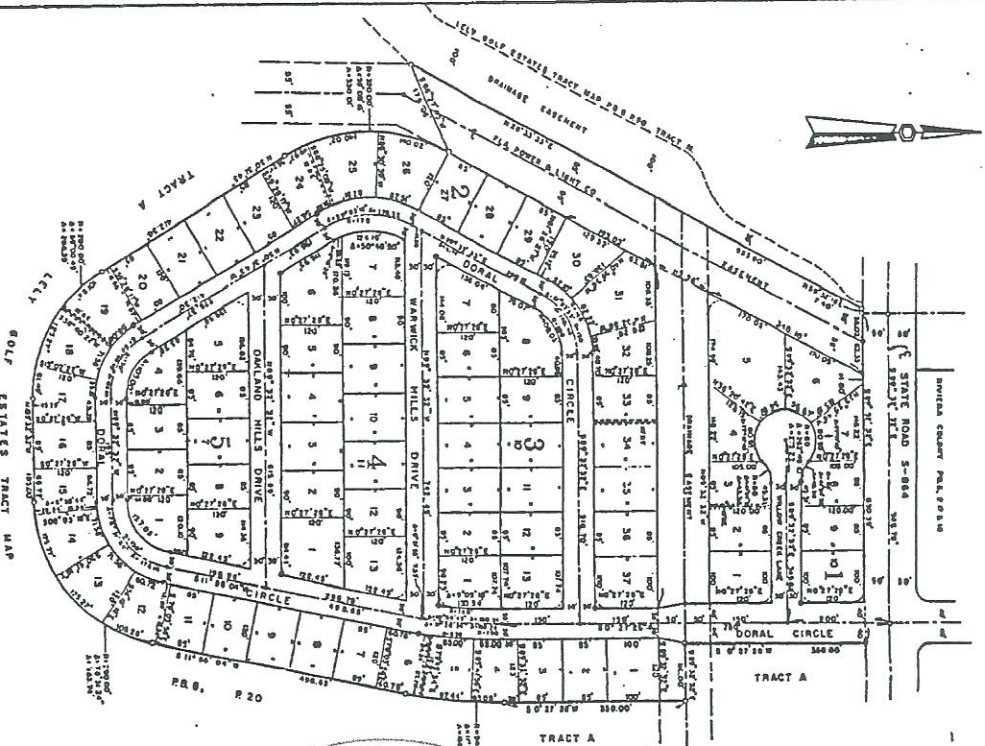
LELY GOLF ESTATES UNIT NO. 1

A SUBDIVISION OF TRACT B, LELY GOLF ESTATES,
TRACT MAP, AS RECORDED IN PLAT BOOK B, PAGE 20,
LYING IN SECTION 19, TWP 50 S., RGE. 26 E.,
COLLIER COUNTY, FLORIDA

SCALE 1" = 40'

MAY 1988

THE COUNTY ENGINEERING, INC.
REGISTERED PROFESSIONAL ENGINEERS
LAND PLANNERS & SURVEYORS
DAVIES, FLORIDA



SURVEYOR'S NOTES

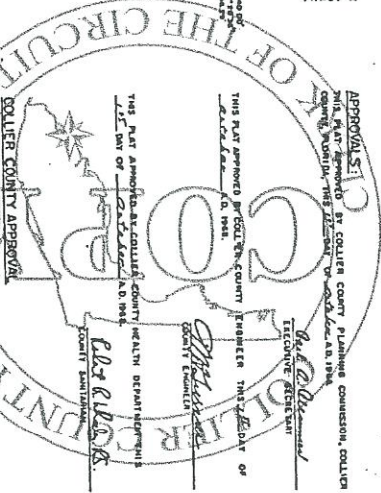
DEMOTES REFERENCED DOCUMENT

REAPPORT INDICATED ON BLOCK CORNERS AND ALL INTERIORS TO BLOCK LINES AND ARE INTENDED FOR PUBLIC USE.

STATUS OF BOUNDARIES IS ASSURED.

RECORDS ON CHANGING LINES ARE NOT LISTED.

BY SURVEYOR'S AND ENGINEER'S



FILING RECORD:

I HEREBY CERTIFY THAT THIS PLAT HAS BEEN EXAMINED BY ME AND THAT IT COMPLIES IN FORM WITH THE REQUIREMENTS OF CHAPTER 1073, LAWS OF THE STATE OF FLORIDA, AND THAT SAID PLAT WAS FILED FOR RECORD IN THE PLAT BOOK OF COLLECTOR PLANNING COMMISSION OF COLLIER COUNTY, FLORIDA, ON THE DATE OF THIS APPROVAL.

BY: Douglas W. White
CLERK OF THE CIRCUIT COURT

DEDICATION:

I HEREBY CERTIFY THAT THE LELY ESTATES, INC., A TRUST CORPORATION INCORPORATED IN FLORIDA, HAS AGREED TO MAKE DONATION TO THE STATE OF FLORIDA TO THE PUBLIC FOR ROAD PURPOSES TO THE RESPECTIVE SITES OF THE LELY ESTATES TRACT, AS SHOWN ALONG WITH THE EXCLUSIVE RIGHTS TO INSTALL, CONSTRUCT AND MAINTAIN ALONG THE RIGHT OF WAY AS SHOWN HEREON, ANY LINES WATER LINES, SEWER, TELEPHONE AND TELEVISION LINES, ELECTRIC LINES, TRAILING LINES, TV ANTENNAE AND ALL OTHER UTILITIES HERETOFORE OR HEREAFTER LOCATED, AND THAT SUCH DONATION IS HEREBY DEDICATED TO THE STATE OF FLORIDA TO BE USED FOR THE PUBLIC PURPOSES AND TO BE SUBJECT TO THE JURISDICTION OF THE LOCAL AGENCIES OF THE STATE OF FLORIDA.

ACKNOWLEDGEMENT:

I HEREBY CERTIFY THAT ON THIS DAY BEFORE ME, A NOTARY PUBLIC, THE PERSONS WHOSE NAMES ARE SET FORTH IN THE ABOVE-ENTITLED INSTRUMENT, TOGETHER WITH THE PERSONS WHOSE NAMES ARE SET FORTH IN THE ABOVE-ENTITLED INSTRUMENT, HAVE APPEARED BEFORE ME AND HAVE DECLARED UNDER OATH THAT THEY ARE THE PARTIES TO THE FOREGOING INSTRUMENT AND THAT THE SAID INSTRUMENT WAS SIGNED AND EXECUTED BY THEM AND THAT THEY HAVE NOT BEEN COERCED, FRAUDULENTLY INDUCED, UNDULY INFLUENCED, OR DECEIVED IN THE MAKING OF SAID INSTRUMENT AND THAT THE FOREGOING INSTRUMENT IS THE ACT OF SAID CORPORATION.

WITNESSE MY HAND AND OFFICIAL SEAL, IN THE COUNTY AND STATE NAMED ABOVE THIS 10th DAY OF MAY, 1988.

BY COMMISSIONER: Douglas W. White
NOTARY PUBLIC, STATE OF FLORIDA
AT LARGE

DEED:

I HEREBY CERTIFY THAT THIS PLAT WAS FILED FOR RECORD IN THE PLAT BOOK OF COLLECTOR PLANNING COMMISSION OF COLLIER COUNTY, FLORIDA, ON THE DATE OF THIS APPROVAL.

SURVEYOR'S CERTIFICATE:

I, Paul T. O'Brien, the Surveyor making this plat, do hereby certify that this is a true and correct copy of the plat and that the same has been examined by me and that the same conforms to the requirements of the laws and rules and regulations of the State of Florida and the Department of Transportation, Florida Statutes, Chapter 1073, Laws of the State of Florida, and all other laws and rules and regulations of the State of Florida.

BY: Paul T. O'Brien
SURVEYOR

THE COUNTY ENGINEERING, INC.
REGISTERED PROFESSIONAL ENGINEERS
LAND PLANNERS & SURVEYORS
DAVIES, FLORIDA

BY: Douglas W. White
CLERK OF THE CIRCUIT COURT

BY: Douglas W. White
SURVEYOR