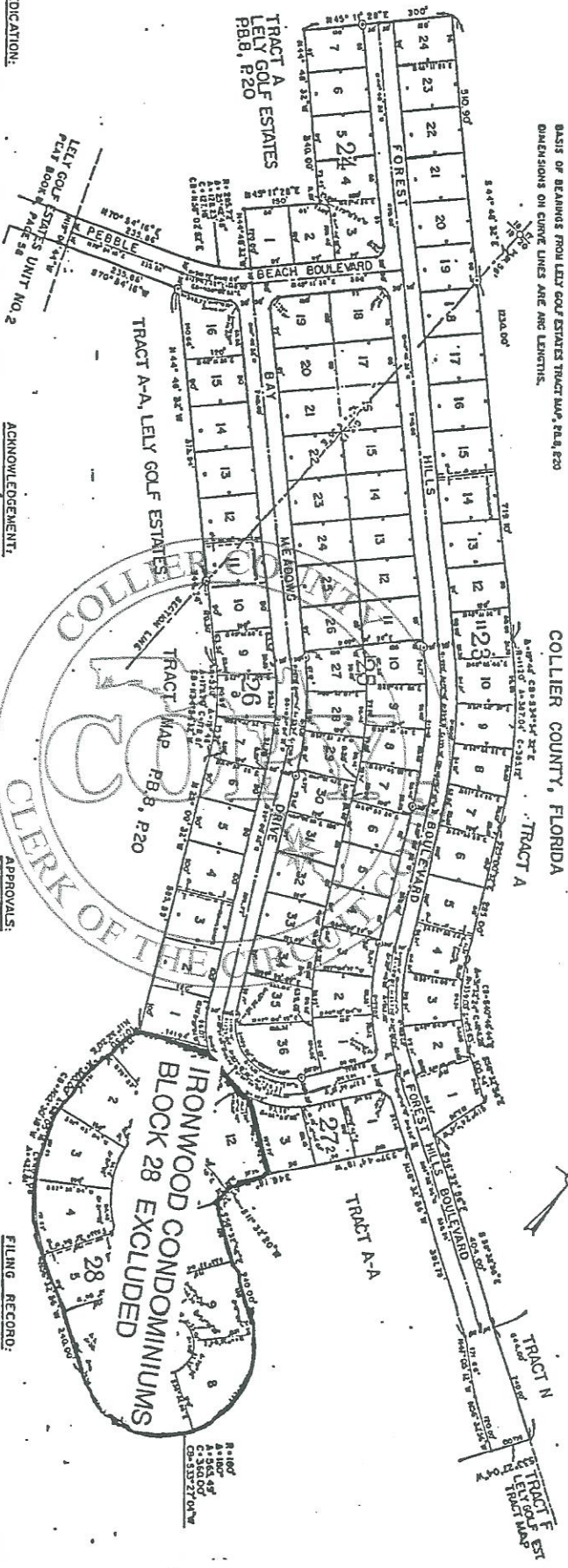


LELY GOLF ESTATES FOREST HILLS SECTION

SURVEYOR'S NOTES:
© DEPORTER PERMANENT REFERENCE MONUMENT.
25' RADIIUS ON ALL FILLET CURVES.
BASIS OF BEARINGS FROM LELY GOLF ESTATES TRACT MAP, P. 20, R. 20.
DIMENSIONS ON CURVE LINES ARE ARC LENGTHS.

LEGAL DESCRIPTION:
A SUBDIVISION OF TRACTS G AND H, LELY GOLF ESTATES
TRACT MAP AS RECORDED IN PLATBOOK 8, PAGE 20, LYING
IN SECTIONS 19 AND 20, TWP 50 S, RGE 26 E,
COLLIER COUNTY, FLORIDA



DEDICATION:
NOW ALL AND BY THESE PRESENTS, THAT LELY ESTATES, INC., A TEXAS CORPORATION AUTHORIZED TO DO BUSINESS IN FLORIDA, THE OWNER OF THE FOREST HILLS SECTION OF THE LELY GOLF ESTATES, HAS CAUSED TO BE LAYED OUT BY ITS VICE PRESIDENT CHRISTINA W. DUNCORP, THIS SECTION AND DOES HEREBY DEDICATE AND ASSIGN FOR PUBLIC PURPOSES THE ROAD AND DRIVE AND SIDE DRIVE OF EACH LOT AND DOES HEREBY DEDICATE THE STREETS AND DRIVEWAY EASEMENTS AS SHOWN HEREON TO THE PRESIDENTIAL USE OF THE PUBLIC FOR PROPER PURPOSES.

IN WITNESS WHEREOF, SAID OWNER HAS CAUSED THESE PRESENTS TO BE SIGNED BY HIMSELF IN THE PRESENCE OF:
[Signature] LELY ESTATES, INC.
BY *[Signature]* CHRISTINA W. DUNCORP
VICE PRESIDENT

ACKNOWLEDGEMENT:
STATE OF FLORIDA
COUNTY OF COLLIER
I, CLERK OF SAID COUNTY, DO HEREBY CERTIFY THAT ON THIS DAY BEFORE ME, A NOTARY PUBLIC DULY AUTHORIZED IN THE STATE AND COUNTY SAID ABOVE TO TAKE ACKNOWLEDGEMENTS, PERSONALLY APPEARED CHRISTINA W. DUNCORP, LELY ESTATES, INC., VICE PRESIDENT OF SAID CORPORATION, AND HEREBY ACKNOWLEDGED BEFORE ME THAT HE EXECUTED THE FOREGOING DOCUMENT IN THE NAME OF AND FOR SAID CORPORATION; THAT AS A CONDITION OF THE FOREGOING DEDICATION IS THE ACT OF SAID CORPORATION; THAT HE IS A NOTARY PUBLIC, STATE OF FLORIDA, COUNTY AND STATE SAID ABOVE THIS DAY OF 1971, A.D.

APPROVALS:
THIS PLAT APPROVED BY THE COLLIER COUNTY ATTORNEY THIS 17th DAY OF 1971.
[Signature] COUNTY ATTORNEY

APPROVALS:
THIS PLAT APPROVED BY COLLIER COUNTY PLANNING COMMISSION, COLLIER COUNTY, FLORIDA, THIS DAY OF 1971, A.D.
[Signature]
EXECUTIVE SECRETARY

APPROVALS:
THIS PLAT APPROVED BY COLLIER COUNTY HEALTH DEPARTMENT, COLLIER COUNTY, FLORIDA, THIS DAY OF 1971, A.D.
[Signature]
COUNTY ENGINEER

FILING RECORD:
I HEREBY CERTIFY THAT THIS PLAT HAS BEEN EXAMINED BY ME AND THAT IT COMPLES ALL THE REQUIREMENTS OF THE PUBLIC RECORD ACT, AND THAT I HAVE FILED THIS PLAT IN THE PUBLIC RECORD OFFICE OF COLLIER COUNTY, FLORIDA, ON THIS DAY OF 1971, A.D. AND RECORDED IN PLATBOOK NO. 10, PAGE 34.

SURVEYOR'S CERTIFICATE:
I, SURVEYOR, HEREBY CERTIFY THAT THIS PLAT IS TRUE AND CORRECT AND WAS PREPARED FROM AN ACTUAL SURVEY OF THE PROPERTY MAP OF THE FOREST HILLS SECTION OF THE LELY GOLF ESTATES, TRACT MAP AS RECORDED IN PLATBOOK 8, PAGE 20, LYING IN SECTIONS 19 AND 20, TWP 50 S, RGE 26 E, COLLIER COUNTY, FLORIDA, AND THAT THE LOCATION, SIZE, TYPE AND MATERIAL, ARE CONSIDERED TO BE CORRECT.

APPROVALS:
COUNTY COMMISSION APPROVAL
THIS PLAT APPROVED IN REGULAR OPEN MEETING BY THE BOARD OF COUNTY COMMISSIONERS AS 1971, A.D. APPROVED THAT THE PLAT IS TRUE AND CORRECT AND WAS PREPARED FROM AN ACTUAL SURVEY OF THE PROPERTY MAP OF THE FOREST HILLS SECTION OF THE LELY GOLF ESTATES, TRACT MAP AS RECORDED IN PLATBOOK 8, PAGE 20, LYING IN SECTIONS 19 AND 20, TWP 50 S, RGE 26 E, COLLIER COUNTY, FLORIDA, AND THAT THE LOCATION, SIZE, TYPE AND MATERIAL, ARE CONSIDERED TO BE CORRECT.